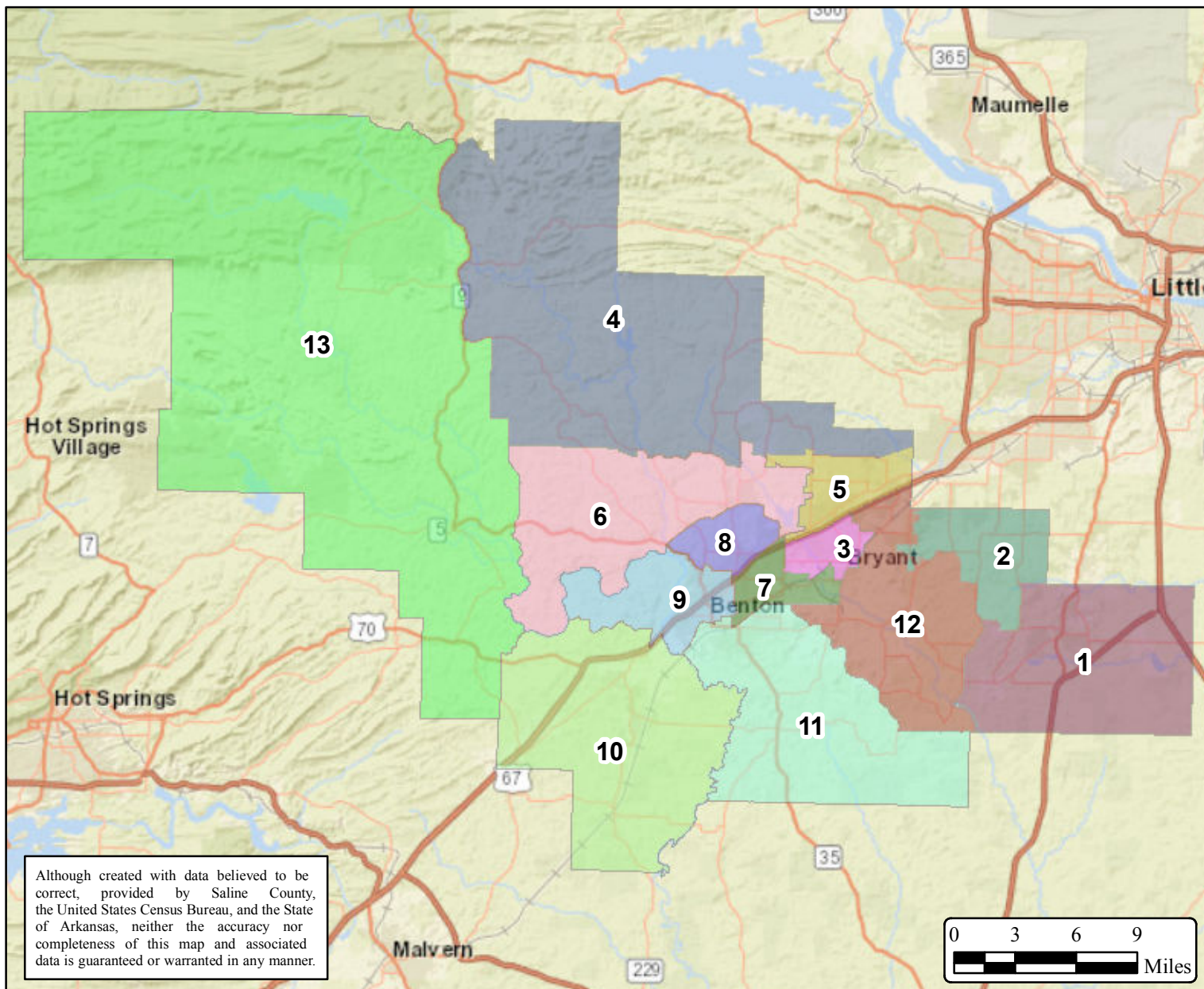




# Saline County

## Justice of the Peace Proposed Districts

Map Created: November 22, 2021



Population Statistics

District	Population	% Deviation	%White	%Black	%Hispanic	%Aminidian	%Asian	%Hawaiian	%Other	% 2+ Races	18 +	18+ % Deviation
1	9529	0.67%	84.23%	3.58%	5.02%	0.48%	1.71%	0.01%	0.24%	4.73%	7262	0.98%
2	9458	-0.08%	58.08%	21.41%	13.81%	0.33%	1.26%	0.11%	0.26%	4.75%	6919	-3.79%
3	9693	2.40%	67.46%	19.14%	5.74%	0.29%	1.91%	0.03%	0.33%	5.11%	7303	1.55%
4	9208	-2.72%	87.83%	1.93%	4.42%	0.48%	0.49%	0.05%	0.23%	4.57%	6872	-4.45%
5	9741	2.91%	67.08%	10.72%	15.42%	0.42%	2.24%	0.05%	0.31%	3.77%	7187	-0.07%
6	9738	2.88%	81.20%	6.01%	5.70%	0.37%	2.31%	0.01%	0.21%	4.20%	7344	2.12%
7	9483	0.18%	80.04%	8.49%	4.78%	0.46%	1.19%	0.00%	0.31%	4.73%	6958	-3.25%
8	9125	-3.60%	83.12%	6.61%	3.89%	0.41%	1.04%	0.01%	0.13%	4.79%	6853	-4.71%
9	9640	1.84%	82.34%	5.86%	5.95%	0.57%	0.57%	0.03%	0.20%	4.47%	7340	2.06%
10	9027	-4.64%	87.54%	2.12%	5.37%	0.49%	0.37%	0.20%	0.12%	3.80%	6832	-5.00%
11	9681	2.27%	79.25%	9.26%	5.74%	0.40%	0.54%	0.10%	0.51%	4.20%	7095	-1.34%
12	9695	2.42%	70.49%	11.07%	11.26%	0.58%	1.20%	0.03%	0.41%	4.96%	7179	-0.18%
13	9038	-4.52%	92.90%	0.93%	2.04%	0.23%	0.37%	0.11%	0.20%	3.23%	8348	16.08%